

N.B. not all reporting relationships assume full supervisor-subordinate relationship with respect to hiring/firing/performance review; the org chart illustrates any general reporting relationship that includes scheduling and organizing work within a department. For clarification on scope of supervisory control of a particular position, please see the respective job description.

Chart #2 Town of Parry Sound Finance & POA Court Services Department - updated 2018 02 12

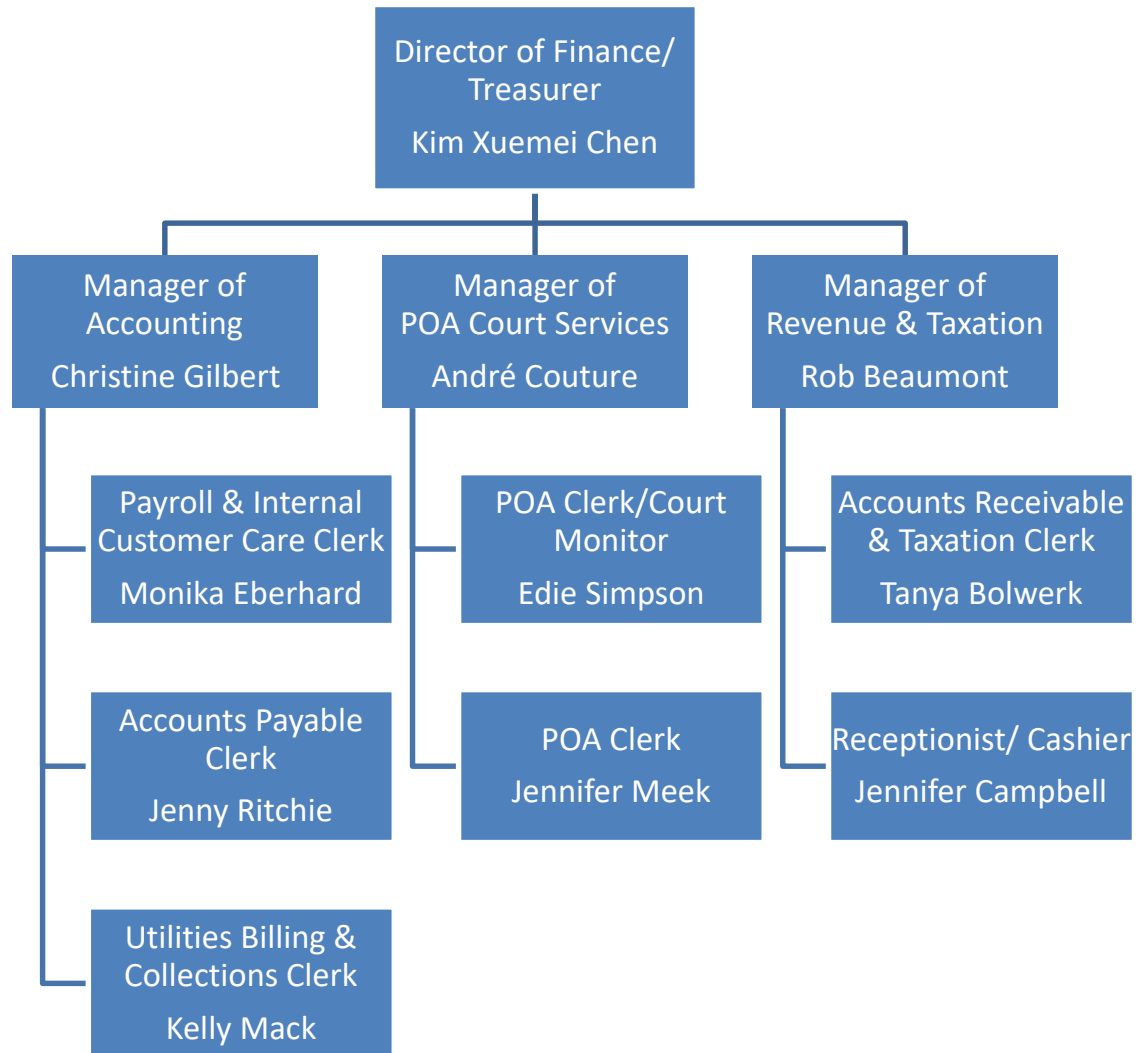


Chart #3

Town of Parry Sound Public Works Department

- updated 2018 09 12

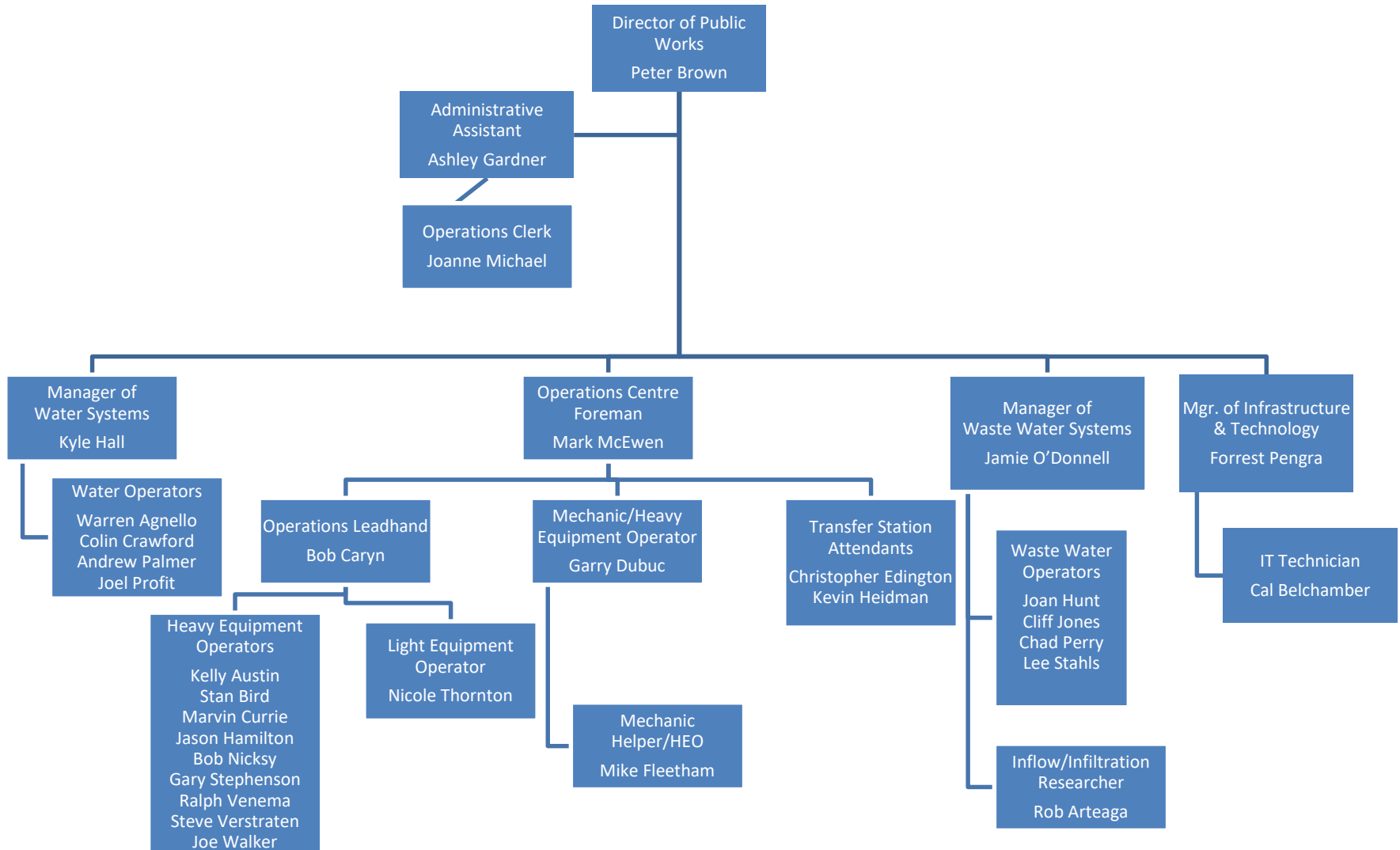


Chart #4 Town of Parry Sound Development & Protective Services Department
07

– updated 2018 09 12

