

page included as a place holder, new photo being prepared

5.0 MASTER PLAN

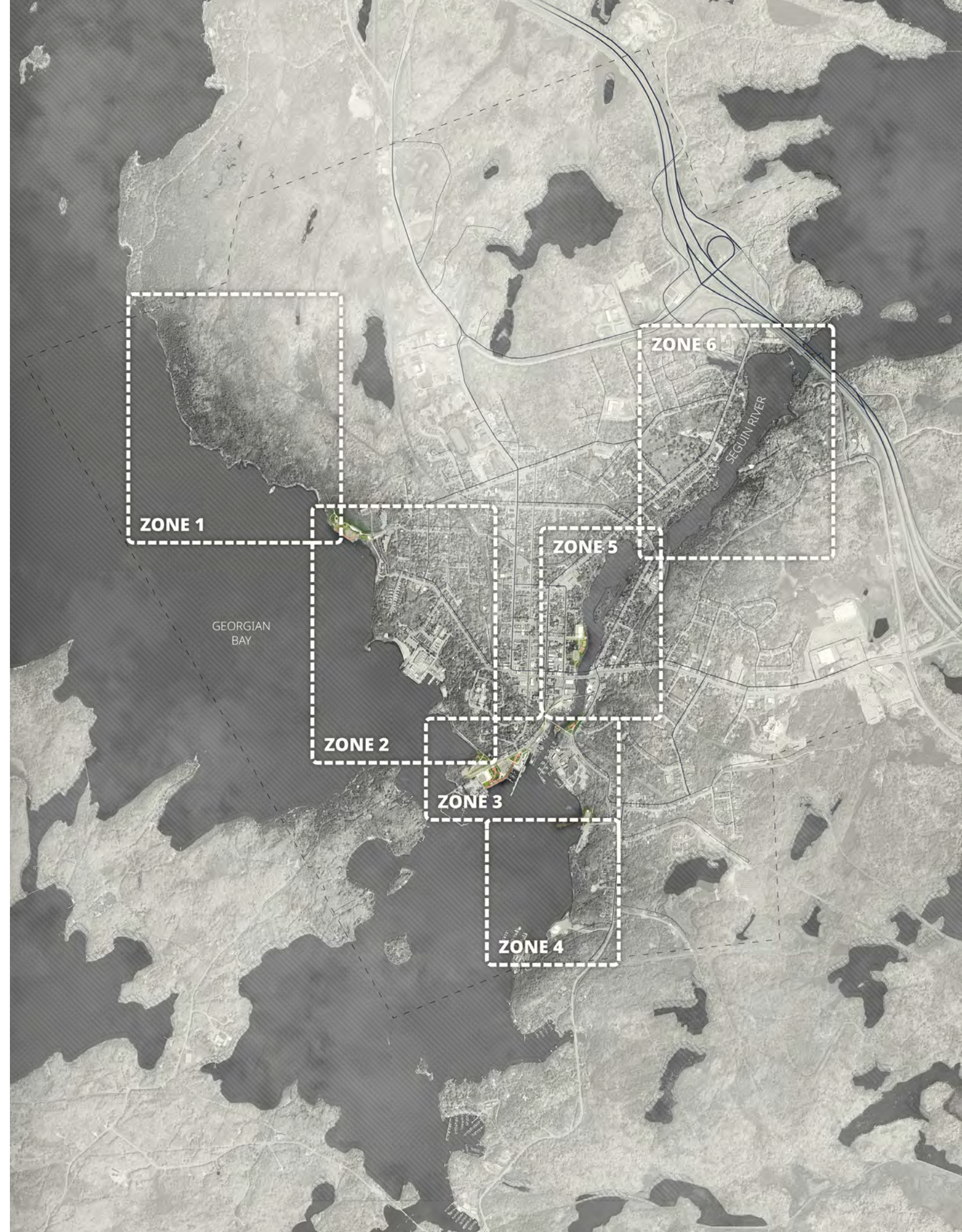


5.1 MASTER PLAN OVERVIEW

This section presents a comprehensive master plan for the revitalization of Parry Sound's waterfront. The plan is organized around the six zones discussed earlier, each designed to enhance the overall waterfront experience in line with the five core goals outlined in the previous section. The document begins with broad recommendations for the town as a whole, followed by design concepts and specific recommendations for each paired waterfront zone. These guidelines provide a strategic framework for future development, with a more detailed implementation plan to be outlined in the final report.

	Public Access	Nature	Connections	Economy	Activation	
1	●	○	●	○	●	Establish new corridors to connect streets and neighbourhoods with the shoreline. Utilize sidewalk improvements, wayfinding signage, existing road allowances and municipal lands, and easements as necessary
2	●	○	●	○	●	Improve existing trailheads along the Fitness and Rugged Trails with seating, waste disposal, updated signage/wayfinding, and formalized parking
3	○	○	●	○	●	Create minor trail heads with signage, waste disposal, and seating where the Fitness Trail branches or intersects with a major street
4	○	○	●	○	●	Maintain vegetation and add lighting to improve safety and views to the water along the Fitness Trail
5	○	●	○	○	○	Remove invasive species along Fitness Trail to improve biodiversity
6	●	○	○	○	○	Create policies that require public waterfront access along the Georgian Bay shoreline through the development approval process. Work with existing landowners to provide or improve access, where feasible
7	○	●	○	○	○	Encourage new developments to integrate with and enhance the shoreline's natural identity by maintaining existing views, topography, and significant environmental features
8	○	●	○	○	○	Improve biodiversity and ecology through native plantings, shoreline restoration, and protecting existing natural areas
9	○	●	○	○	○	Investigate naturalization strategies in existing parks and public spaces to enhance the Town's natural identity

Town-Wide Recommendations

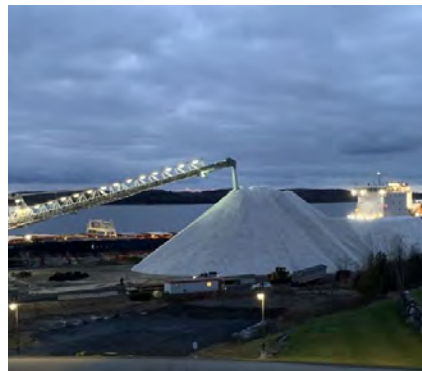


North Salt Dock Concept

The North Salt Dock Concept Design reimagines the site as a vibrant, accessible public space that honors its industrial past while integrating modern amenities and natural beauty. Key features include the preservation of the existing boat launch, with designated parking for boats, trailers, and trailhead users. A waterfront walkway will connect the parking area, providing easy access for visitors. A new, organized trailhead entry plaza will link the two sections of the Northshore Rugged Trail and create a formal connection between the Northshore Rugged Trail and the Fitness Trail. A large open lawn will accommodate festivals like Rib Fest and other community events. The historic salt dock will be symbolized through berms and tree plantings that evoke the original salt piles. The site will also feature space for art installations and interpretive signage to educate visitors on the site's natural and industrial history. The existing weight scale structure could be repurposed as a cultural attraction, similar to the Gasoline Grill in Copenhagen. This design aims to create a dynamic and sustainable waterfront destination, connecting people to both nature and the site's rich history.



1 Potential Reuse of Weigh Scale



2 History of Salt Piles



2 Mounds With Natural Planting Inspired by Salt Piles



3 Painted Asphalt



4 Art Installation/Lookout



5 Formalized Trail Head with Seating

Design inspiration for conceptual development, derived from a curated selection of precedent images





PARRY SOUND HARBOUR

MNR Lands Concept 1

The Stockey Centre Concept 1 envisions a dynamic, multi-functional space that combines a public plaza, lookout platform, and small parks. North of Bay Street, directly adjacent to the Stockey Centre, visitors will find the lookout, Monument Park, and Music Park (with existing monuments and interactive installations relocated to these parks).

To the south of Bay Street, a proposed plaza will feature a centrally located fountain that can accommodate seasonal programming—such as a skating rink in winter and a fountain in summer. Nearby amenities will include a stage for concerts and a facility housing washrooms, changing rooms, and a mechanical room. The informal driveway west of the plaza will provide service access to the stage and washroom building. Berms will be integrated around the park to block prevailing winds and noise. Steps and platforms will allow limited access to the waterfront without disturbing the shoreline, drawing inspiration from projects like Kroyer Plads and Sandkaj. The park will also feature market containers to support local vendors. The design prioritizes easy circulation, with clear pathways connecting the lookout platform, parks, plaza, and the water's edge, creating a balanced environment for relaxation, play, and cultural engagement.



1 Interactive & Educational Elements



2 Tree Lined Promenade



5 Lawn & Playground



3 Relocated Market Stalls



4 Steps Down to Water



6 Shallow Fountain/Skating Rink

Design inspiration for conceptual development, derived from a curated selection of precedent images



MNR Lands Concept 2

The design envisions a plaza carved from a dynamic, natural landscape, featuring expansive planting beds, lawns, and smaller garden areas that seamlessly integrate built and green spaces. A winding trail, inspired by projects in Bracebridge and Arrowhead Park, will offer year-round recreational access, with the option of being frozen in winter for skating. Strategically placed berms will provide shelter from wind, parking areas, and roads. A naturalized riverwalk, with an organic shoreline and native plantings, will run along the water's edge, promoting ecological integrity. At the southwestern edge, a natural play area will encourage interaction with the environment, surrounded by trees and open spaces. Market stalls will be incorporated into the site, providing spaces for local vendors during community festivals. Throughout the plaza, naturalized plantings will dominate, emphasizing sustainability and low-maintenance care, while a few flexible lawns will offer spaces for events and informal gatherings. The overall concept fosters a sense of tranquility and play, ensuring the plaza is functional and inviting throughout the year.



1 Interactive & Educational Elements



2 Tree Lined Promenade



5 Lawn & Playground



3 Relocated Market Stalls



4 Steps Down to Water



6 Shallow Fountain/Skating Rink

Design inspiration for conceptual development, derived from a curated selection of precedent images



Town Dock Concept

Two design concepts have been developed for the Town Dock, each offering a distinct approach to revitalizing the space. Concept 1 (Interim Option) provides a temporary solution by maintaining the existing driveway and green buffer between the fitness trail and parking area, while introducing temporary enhancements to improve pedestrian access. This concept focuses on quick, low-cost improvements designed to engage the community in the short term. In contrast, Concept 2 (Final Option) presents a transformative long-term vision, featuring a central plaza that steps down to the dock, a woonerf shared street, shade structures, and a continuous promenade. This design prioritizes pedestrian and cyclist accessibility, enhancing the overall waterfront experience. Together, the two concepts balance immediate functionality with a forward-thinking vision for future growth and community engagement.



1 Shade Structure and Lawn



2 Tree Lined Promenade



4 Gateway Sign/ Public Art



3 Tree Lined Fitness Trail

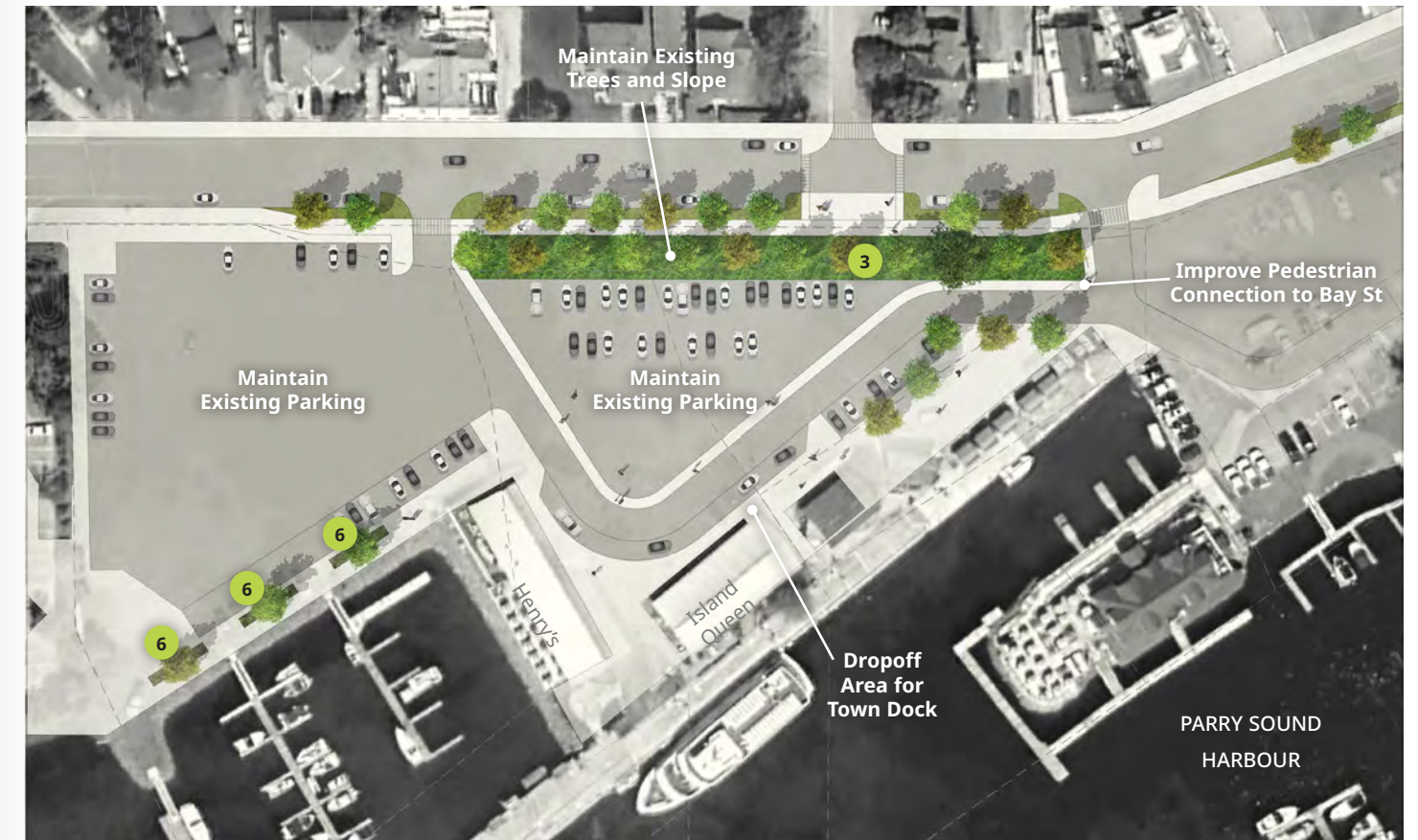


5 Shared Street

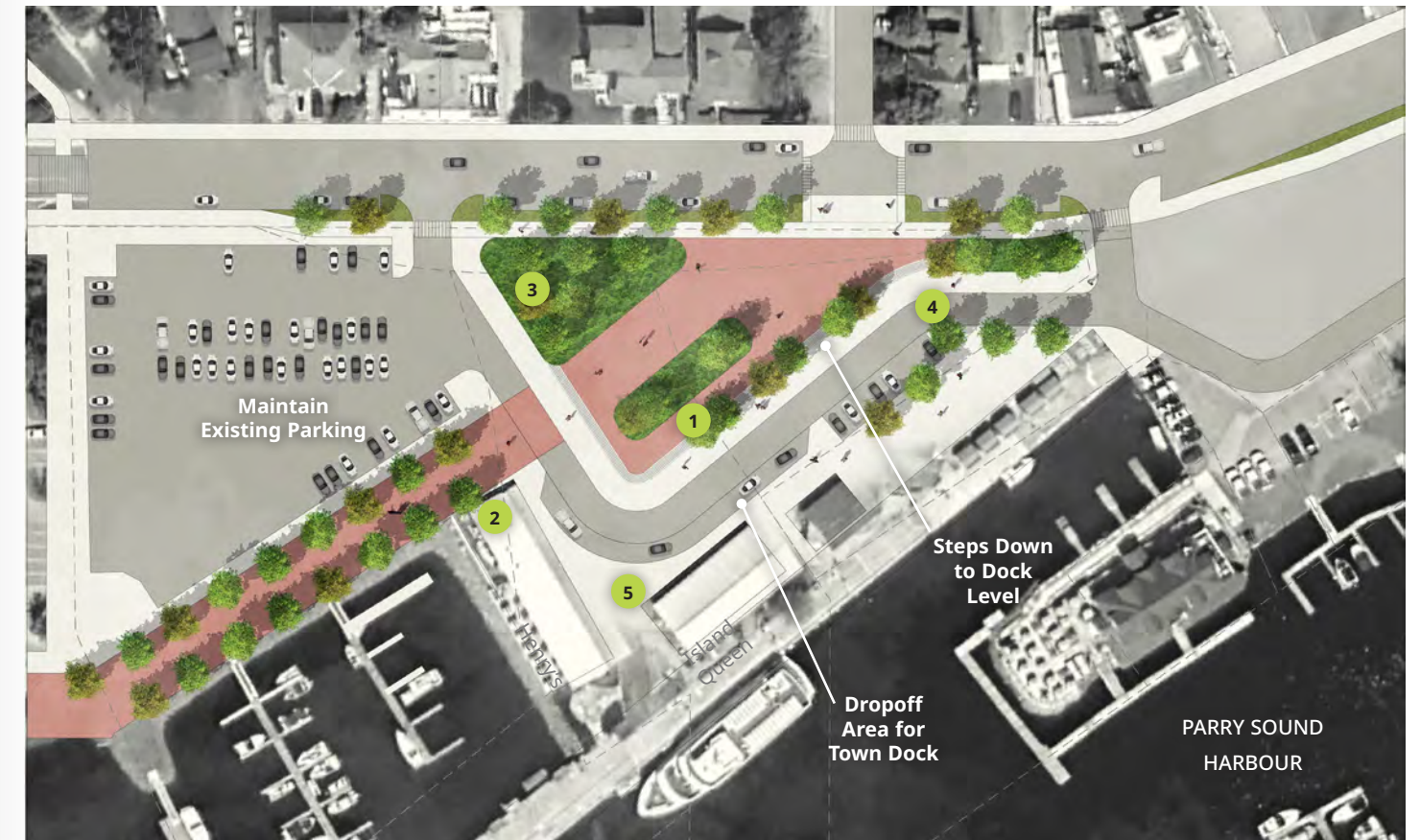


6 Temporary Planters

Design inspiration for conceptual development, derived from a curated selection of precedent images



Town Dock, Interim Concept



Town Dock, Final Concept

Seguin River Mouth Concept

The design concept establishes a seamless connection between two sections of the Fitness Trail, incorporating a boardwalk and skatepark as central features. The 2.5-meter-wide boardwalk leads to a circular lookout that provides gathering and seating opportunities, while also stepping down to a rocky area ideal for exploration. The skatepark is bordered by dense plantings, which preserve views while offering a natural buffer. Adjacent to the skatepark, a central plaza serves as a hub where the two paths of the Fitness Trail converge. An amphitheatre, utilizing the natural slopes of the landscape, provides tiered seating next to the skatepark. The design emphasizes ecological preservation, clear signage, and spaces for relaxation and exploration, creating a harmonious connection between the skatepark, Fitness Trail, and the surrounding environment.



1 Viewing Platform



2 Revitalized Skate Park



3 Formalized Trail Head



4 Seating Area/Steps

Curated selection of precedent images



Champagne Street Pier Concept

The concept design for the Champagne Street Pier seeks to transform a historic industrial site into a vibrant community space by repurposing the existing piers and creating a large viewing platform offering scenic views of boats and planes. The design incorporates shoreline naturalization, improved access to a future pumping station, a boat slip for parking, and enhancements to the Fitness Trail trailhead. An interactive history board and educational signage will highlight the site's past as an oil drop-off location and showcase the environmental remediation efforts, fostering a deeper connection to the area's history while promoting ecological restoration and community engagement.



1 Picnic Area



2 Seating Area on Pier



3 Formalized Trail Head



4 Reconstructed Pier

Curated selection of precedent images



Bobby Orr Centre Concept

The proposed expansion at the Bobby Orr Community Centre includes extending the fitness trail to connect key features, such as the Centre, a proposed kayak dock, reconfigured sports court areas, and a boat launch. The new kayak dock will provide easy water access with steps leading down to tie up boats, and a shaded seating area will be added nearby, offering a space to relax and enjoy the surroundings. The sports court will be reorganized to improve functionality, while a formalized parking area will ensure convenient access. To the south of the court, the trail will lead to a passive lawn area and a wooden ramp for the boat launch, enhancing both active and passive recreational opportunities.



1 Picnic Pavilion



2 Seating Overlooking Water



3 Boat Rental



4 Relocated Basketball and Tennis Courts

Design inspiration for conceptual development, derived from a curated selection of precedent images



